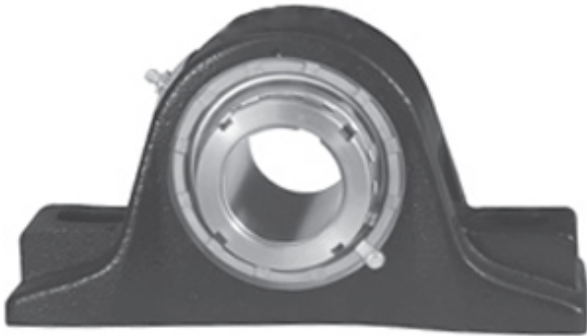




ISO BEARING-SINGAPORE (PTE)LTD.

1.938 Inch | 49.225 Millimeter x 3.156 Inch |
 80.162 Millimeter x 2.75 Inch | 69.85 Millimeter
 REXNORD ZPS9115 Pillow Block Bearings



Bearing No. ZPS9115

ZPS9115 Bearing 2D drawings and 3D CAD models

Category	Pillow Block Bearings
Inventory	0.0
Manufacturer Name	REXNORD
Minimum Buy Quantity	N/A
Weight	9.307
EAN	0698210170103
Product Group	M06288
Number of Mounting Holes	2
Mounting Method	Tapered Adapter Sleeve
Housing Style	2 Bolt Pillow Block
Rolling Element	Spherical Roller Bearing
Housing Material	Cast Iron
Expansion / Non-expansion	Expansion
Mounting Bolts	5/8 Inch
Relubricatable	Yes
Insert Part Number	9115U
Seals	Clearance Seal
Housing Configuration	1 Piece Solid
Inch - Metric	Inch
Other Features	Double Row Extra Heavy Duty
Long Description	2 Bolt Pillow Block; 1-15/16" Bore; 2-3/4" Base to Center Height; Tapered Adapter Sleeve Mount; Spherical Roller Bearing;



ISO BEARING-SINGAPORE (PTE)LTD.

	Relubricatable; Cast Iron; Clearance Seal; Expansion
Category	Pillow Block
UNSPSC	31171511
Harmonized Tariff Code	8483.20.40.80
Noun	Bearing
Keyword String	Pillow Block
Manufacturer URL	http://www.rexnord.com
Manufacturer Item Number	ZPS9115
Manufacturer Internal Number	6817010
Weight / LBS	20.5
B	2.75 Inch 69.85 Millimeter
Actual Bolt Center to Center	7.5 Inch 190 Millimeter
D	3.156 Inch 80.162 Millimeter
Bolt Spacing Maximum	0 Inch 0 Millimeter
d	1.938 Inch 49.225 Millimeter
Bolt Spacing Minimum	0 Inch 0 Millimeter
Nominal Bolt Center to Center	7.5 Inch 190 Millimeter